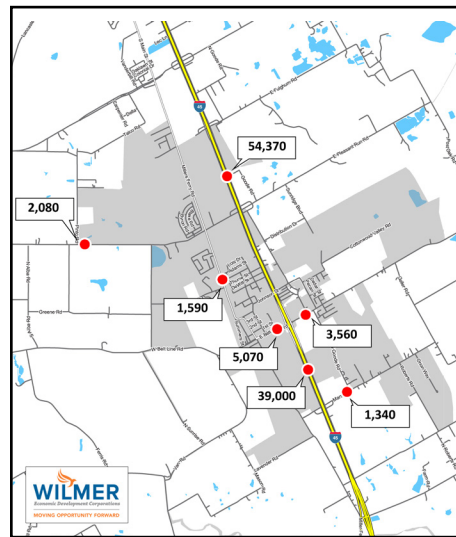
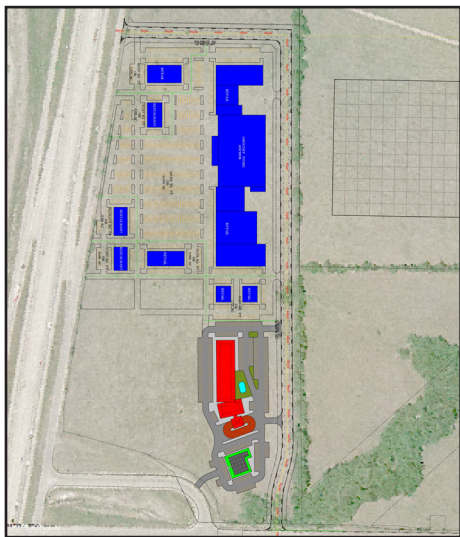


# NEC I-45 and Pleasant Run Road - Wilmer, Texas

Located on the northeast corner of the I-45 N Service Road and Pleasant Run Road, this property is approximately 30 acres. There are no buildings on this property, but plans include a small retail development with anchor grocery store to serve adjacent industrial and residential areas.

Wilmer offers easy access to all regional Interstates (I-45, I-20, I-30), U.S. Highways, the Union Pacific Intermodal facility, and both international and general aviation airports. Major employers include Fortune 500 companies like Unilever, Proctor & Gamble, Whirlpool, Ace Hardware and Medline.



Wilmer Traffic Counts	Vehicles per Day
Interstate 45 - North of E Pleasant Run Road	54,370
E Pleasant Run Road - East of Pinto Road	2,080
E Belt Line Road - West of Wilmer Heights Drive	3,560
E Belt Line Road - West of Interstate 45	5,070
Interstate 45 - South of Dalport Parkway	39,000
Mars Road - West of S Goode Road	1,340
Millers Ferry Road - South of Adams Street	1,590

Source: CoStar 2016

Demographics	1-mile	3-mile	5-mile	PTA
2017 Population	1,306	6,643	24,309	26,431
2022 Population	1,423	6,957	25,189	27,619
% Growth 2017 - 22	8.9%	4.7%	3.6%	4.5%
Workplace Employees	236	3,327	10,668	8,384
Households	386	2,010	7,239	7,655

Daytime Employment (PTA)	
Workplace Employees	8,384
Total Employers	334

Income (PTA)	
Median Household	\$50,052
Average Household	\$62,337

Households (PTA)	
Households	7,655
% Household Growth 2017 - 2022	4.9%
% Household Growth 2010 - 2017	7.8%
Avg Household Size	3.0

Education (PTA)	
Less than 9th grade	12.9%
Some High School	15.8%
High School	33.7%
Some College	22.8%
Associates Degree and Above	14.6%

Housing Units (PTA)	
Renters	24.9%
Owners	75.1%

Race (PTA)	
White	38.8%
Black	20.3%
Asian	0.2%
Hispanic	39.1%
Other	1.6%

Age (PTA)	
0 - 18	24.8%
18 - 34	26.4%
35 - 54	26.9%
55 - 74	18.4%
75+	3.6%



David D. Miracle CECD  
 Executive Director  
 128 N Dallas Ave  
 Wilmer, TX 75172  
 M) 972-965-6348  
 O) 972-441-6373  
 dmiracle@wilmeredc.com  
 wilmeredc.com